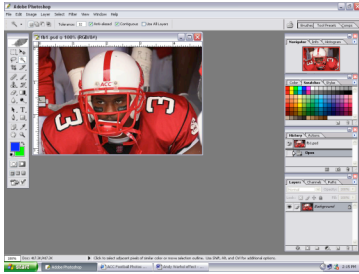


## Andy Warhol effect

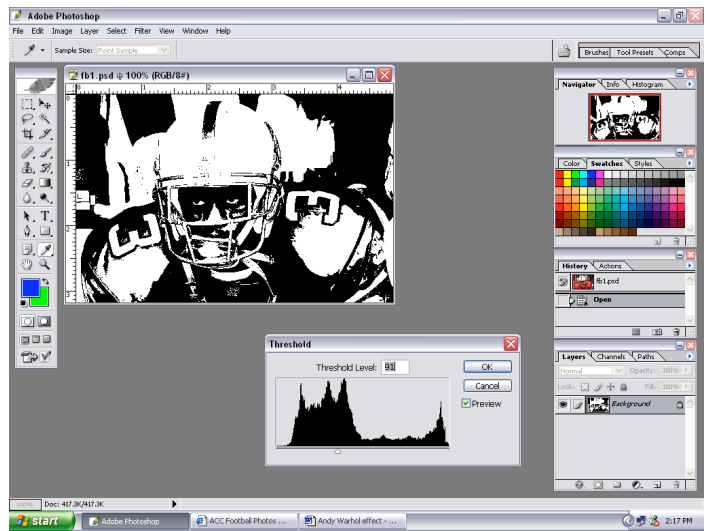
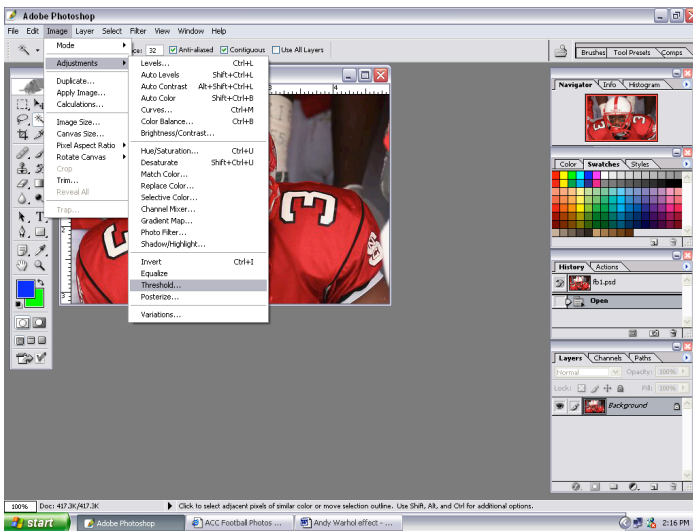
-Find a picture online or use one of the photos of yourself.

-Open the picture in Photoshop and crop the image to use just the face and area you want to keep.



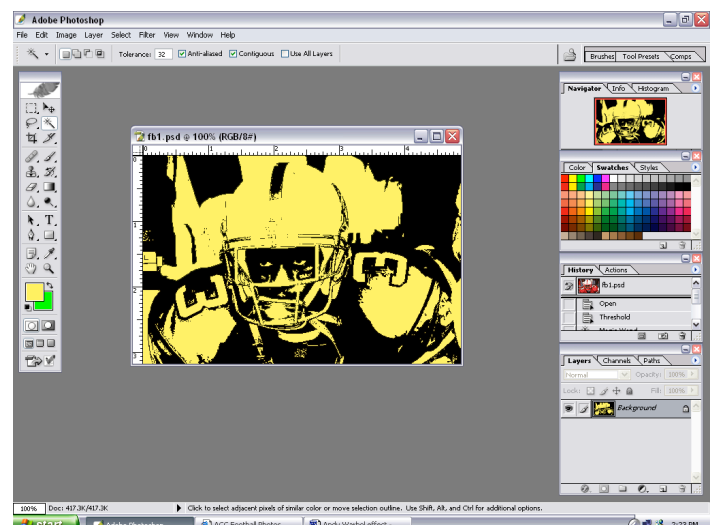
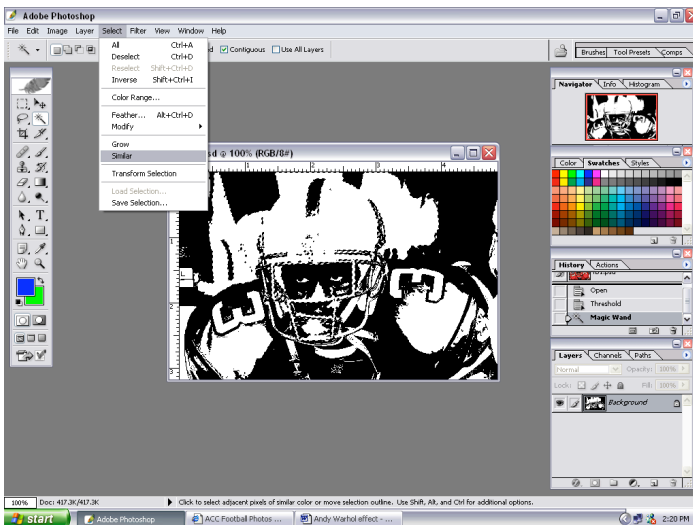
-Choose Image>Adjustments>Threshold.

-Then adjust the slider so as to see some detail in the image.



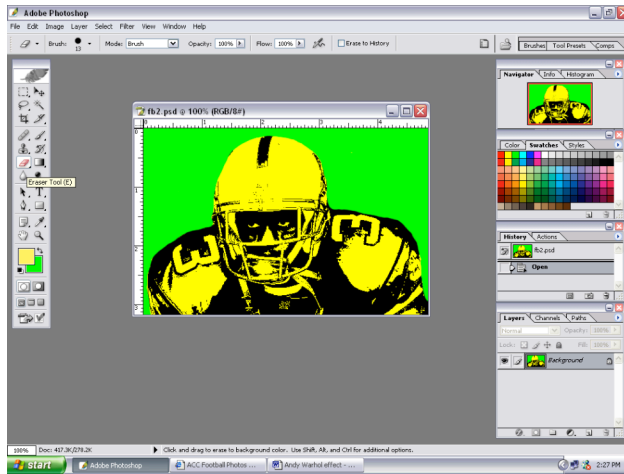
-Use the Magic Wand to select the WHITE area. Then from the top menus choose Select>Similar.

-Choose a color. Fill. Deselect.

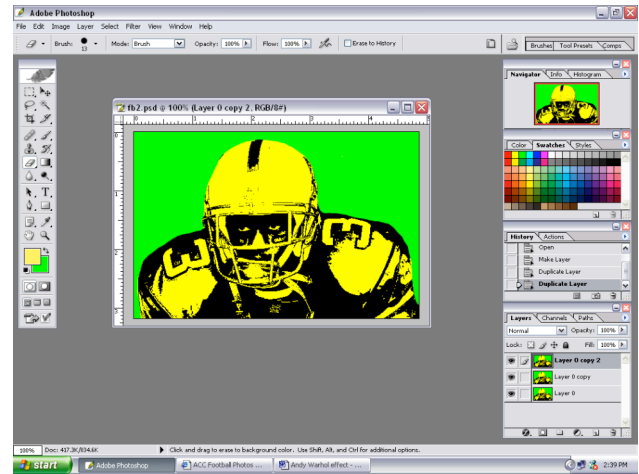


## Andy Warhol effect continued

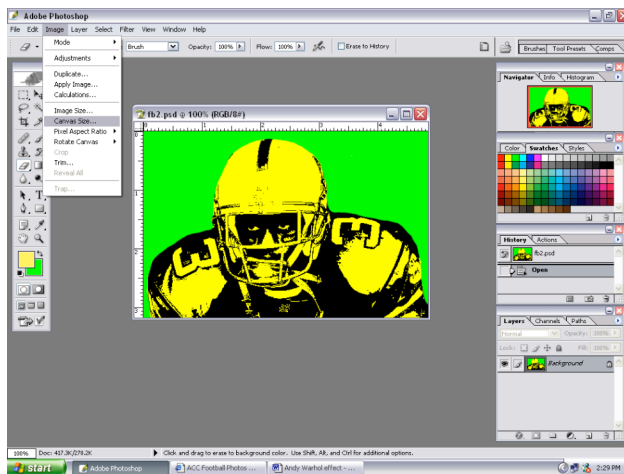
-Choose a background color.  
With the Eraser tool, paint out the background.



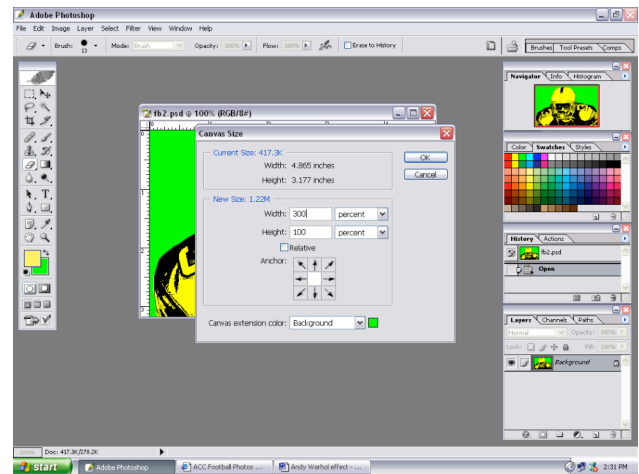
-Unlock the background layer and duplicate it.  
2 times.



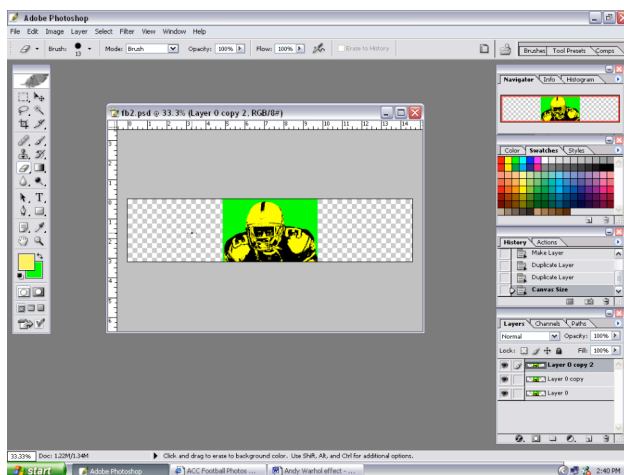
-Once the image is nice and clean, to the top menus and choose Image>Canvas Size.



- We are only changing the Width.  
We want to make the Width 3 times the size,  
so type in 300 percent, and hit OK.



-Zoom out to see the entire canvas.



-Use the move tool to spread each layer out.  
-Repeat the process to change the color of the  
other 2 layers. Label all layers.

